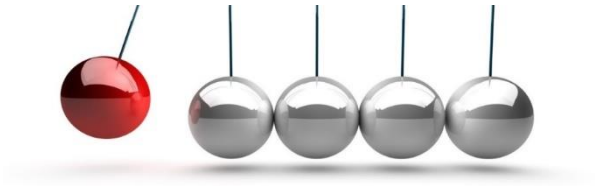




Turning Data into Profit

# Our Company



Founded in 1985, ISI has a proven history of developing trusted, long-term client relationships.

**Turning Data into Profit** is our strength by delivering the right data, to the right people, at the right time.

We serve a variety of industries including Hospitality/Restaurant, Healthcare, Government, Manufacturing, Distribution, Energy, Construction, and more.

## Process Automation

- System Integration
- Application Development
- Data Conversion
- Report Distribution

## Reporting & Business Intelligence

- Unified Analytics
- Dashboards & KPI Mgmt.
- Ad Hoc & Self-Serve Analytics
- Data Strategy & Governance

## Project Leadership

- SQLRx® / Remote DBA
- Security
- Disaster Recovery Planning
- PMO & Delivery Mgmt.

# Our HRIS Clients



# System Integration

## Automated Employee Onboarding

Multiple locations and employees - are you starting to feel the pain of manual processes?

[Automated Employee Onboarding](#) is the most common service we provide in the HRIS space. This is typically an integration between your HRIS, POS, Active Directory, ERP, etc.

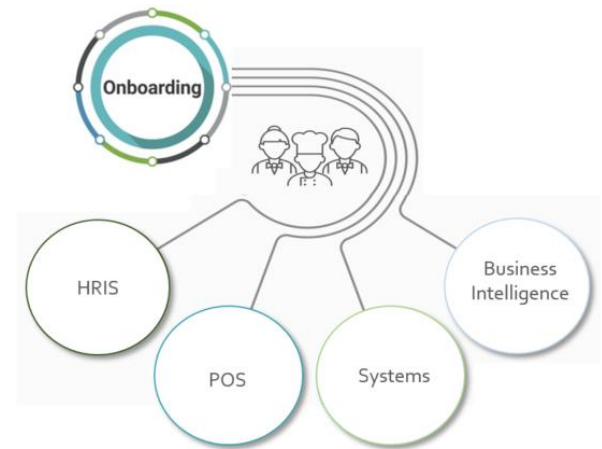
### Most Common Scenarios:

#### HRIS → POS and/or Active Directory

Employee Data (New Hires, Rehires, Terms, Updates) is extracted from your HRIS and sent to your POS or AD - eliminating dual entry, while improving latency and accuracy. HRIS and POS systems typically expose Developer APIs or other entry points (SFTP) allowing us to programmatically connect the dots.

#### POS → HRIS

Punch / Tip data is also sent back from the POS to the HRIS system for Payroll. *Do you want to Process Payroll or Manage Exceptions?* As you grow, Automation and Scalability is essential.



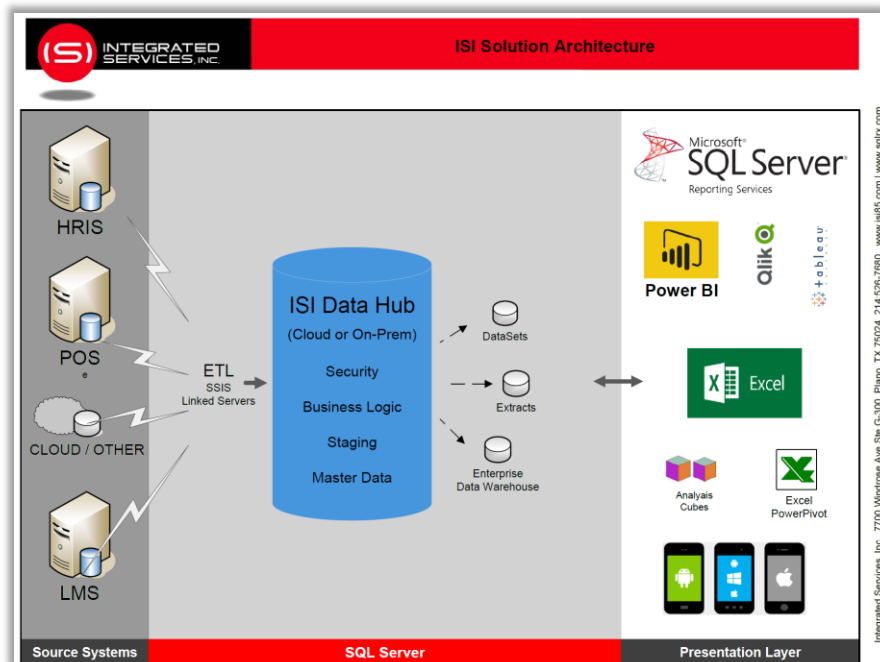
# Unified Analytics

SQL Server is most often used to implement Automated Employee Onboarding or any other data-related initiative. This requires utilizing an existing server or ISI will stand up a new server in the Cloud. Data flowing from system to system will pass through and persist in the ISI Data Hub.

**Load Order/Ticket Detail from the POS stored in the ODS** can be added as a service giving the ability to provide insightful Consolidated Reporting & Business Intelligence to Management.

ISI extracts from popular POS systems such as Aloha and Toast but also pulls as needed from supporting systems such as Scheduling, Learning, CRM, etc.

Gain access to your own data and the sky is the limit!



# Custom Application Development

**Custom Applications** are often required to **Bridge the Gap** between what your current systems offer and the remainder of what you need to fully automate and run your business most efficiently.

Examples:

- SFTP Assistance – transferring files as-is or with modifications from one system to another
- Tip Pooling Calculations
- Various Workflows / Approvals



ISI builds a custom internal website utilized for defining mappings between systems. Job Codes and Location Codes, for example, seldom match between the HRIS and the POS. These Mappings, Org Chart Definition, Fiscal Calendar Setup, and Report Recipient Setup are just some of the most common uses of this custom website. The site can also give visibility to the data being transferred such as Employees and/or Time Punches.

# Reporting & Business Intelligence



SQL Server Reporting Services (SSRS) provides a set of on-premises tools and services that create, deploy, and manage mobile and paginated reports. If you own SQL Server then you own SSRS. We typically use SSRS for:

- Daily Sales - Consolidated
- Product Mix
- Labor Summary
- Server Performance
- Etc.



Power BI is a Microsoft business analytics solution that lets you visualize your data and share insights across your organization or embed them in your app or website. Connect to hundreds of data sources and bring your data to life with live dashboards and reports. Power BI is a powerful, affordable option recommended by ISI as your BI launching pad allowing your Power Users to slice and dice:

- No Ticket No Taco
- What are your pain points?
- What are opportunities to improve?
- What anomalies do you have from location to location?



# SQLRx / Remote DBA



SQLRx is a division of ISI providing expertise and assistance to companies needing SQL Server Database Administration services and/or Performance Tuning Analysis assistance.

SQLRx's RemoteDBA - provides a "Part Time DBA" to perform the critical tasks that help keep your SQL Server healthy and in an optimal running state. ISI offers a [FREE](#) HealthCheck - a live review of your current SQL and Windows performance.

All reviews are performed by a Senior DBA while speaking directly with a company staff member to provide observations and recommendations regarding the health of your SQL Server.

## SQLRx® RemoteDBA® Services\*

### Configuration

Review server and database configuration  
Make recommendations on best practices and optimizations

### Backups

Create, monitor and verify backups

### Maintenance

Intelligent maintenance jobs

### SQL Server Agent Jobs

Long running job monitoring  
Review of existing jobs

### Security

User administration

### Logs

Review SQL and Windows event logs

### Performance

Performance monitoring of over 150 perfmon counters

### Storage

Capacity plan

### SQL Server Updates

Hotfix and Service Pack notification



2008 DATA MANAGEMENT SOLUTIONS  
**PARTNER OF THE YEAR-WINNER**  
Database Management

# Data Conversion

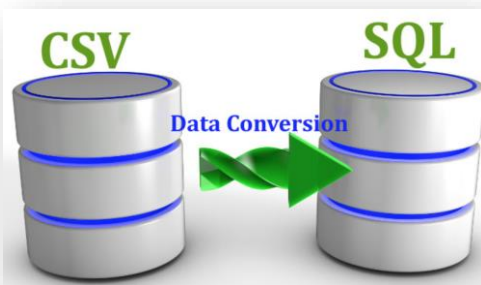


It's likely a major Data Conversion is required when moving to a new HRIS system. ISI provides programmatic massaging, mapping, and transformation if large or numerous data sources including .CSV or Excel are involved.

ISI utilizes SQL Server Integration Services (SSIS) and/or .NET console apps to accomplish the needed data conversion tasks.

Examples of Data Conversion:

- Mapping legacy HRIS exports to the selected HRIS system's desired format
- Loading POS punch exports and converting to HRIS format



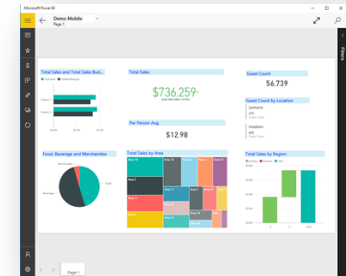
# Business Intelligence

## Power BI Demo



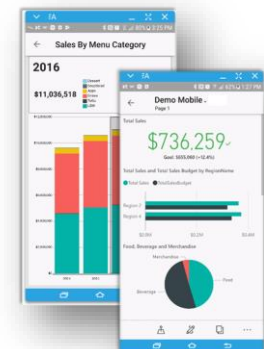
### PC

- ☐ [CLICK HERE](#) to view the Desktop Browser Power BI Demo
- ☐ User: **isiCafe@isi85.com**
- ☐ Password: **isi85.com**
- ☐ Use the 'Select Location(s)' and/or 'Week Ending' filters to the report
- ☐ Use the ellipses (...) in the upper right corner to export to Excel



### Mobile

- ☐ Download the 'Microsoft Power BI' app from the App Store
- ☐ Open the app
- ☐ Tap 'Get Started'
- ☐ Tap 'Power BI' to connect
- ☐ User: **isiCafe@isi85.com**
- ☐ Password: **isi85.com**
- ☐ You're good to go! Tap 'Start Exploring'
- ☐ The application will ask 'Let Power BI Send Notifications?' Click 'Not now'
- ☐ From the Workspaces menu, tap "ISI Cafe Mobile Demo"
- ☐ Tap 'Reports'
- ☐ Tap 'ISI Cafe Mobile Demo'
- ☐ The application will ask 'Allow Power BI access to your location?' Click 'Not now'
- ☐ Try both portrait and landscape mode on your phone for different views



# Case Studies

## Challenge

- Enterprise systems were not connected
- Heavy manual processes
- Needed more visibility to data
- Restaurants food prep amounts were not accurate
- Latency

## Solution

- ODS (Operational Data Storage)/Data Warehouse development for multiple source data integrations:
- HR-Ultipro/Equifax/Taleo
- Payroll-Paychex/Money Network
- Restaurant/POS-Ctuit/Aloha/MenuLink/HR Bridge/Hot Schedules
- Automated BI Report Distribution
- Performance Management Dashboards
- Internal Web Applications
- Administrative Controls
- Ad-hoc reporting
- Access to daily Automated Prep Sheets

## Results

- Streamlined & Automated Processes
- Error reduction
- Improved efficiency
- Management visibility to Food Waste Summary and other critical KPIs
- Minimized latency



## Challenge

- Enterprise systems were not connected
- Heavy Manual processes
- Latency

## Solution

- ODS (Operational Data Storage)/Data Warehouse development for multiple source data integrations:
- HR-People Matter
- Payroll-ADP
- Restaurant/POS-Aloha/MenuLink/HR Bridge
- Internal Web Applications
- Administrative Control

## Results

- Streamlined & Automated Processes
- Error reduction
- Improved efficiency
- Minimized latency



## Challenge

- Cost prohibitive, expensive vendor-provided data warehouse reporting
- Polling process at remote locations slow to update Data Warehouse due to latency issues
- Process to update or add new calculations to Data Warehouse costly and time consuming

## Solution

- New SSIS build for extraction-transformation-load processes to load Data Warehouse from Aloha files
- Developed Data Warehouse concepts including multi-dimensional database modeling in existing instance of SQL server Analysis Services

## Results

- Full elimination of costly vendor-provided software
- Streamlined & automated load of polling data into Data Warehouse
- Improved reliability, consistency and frequency of ODS and Data Warehouse updates
- Enabled acceleration of the availability and depth of data available to filed management

# Contact Us



**Mark White** – Principal

Integrated Services, Inc.

7700 Windrose Ave Ste G-300, Plano, TX 75024

[www.isi85.com](http://www.isi85.com) | [www.sqlrx.com](http://www.sqlrx.com)

214-675-9934 - c

